

5 FT POWER CORD.

3 KW HEATERS AND ABOVE ARE NOT SUPPLIED WITH POWER CORDS.

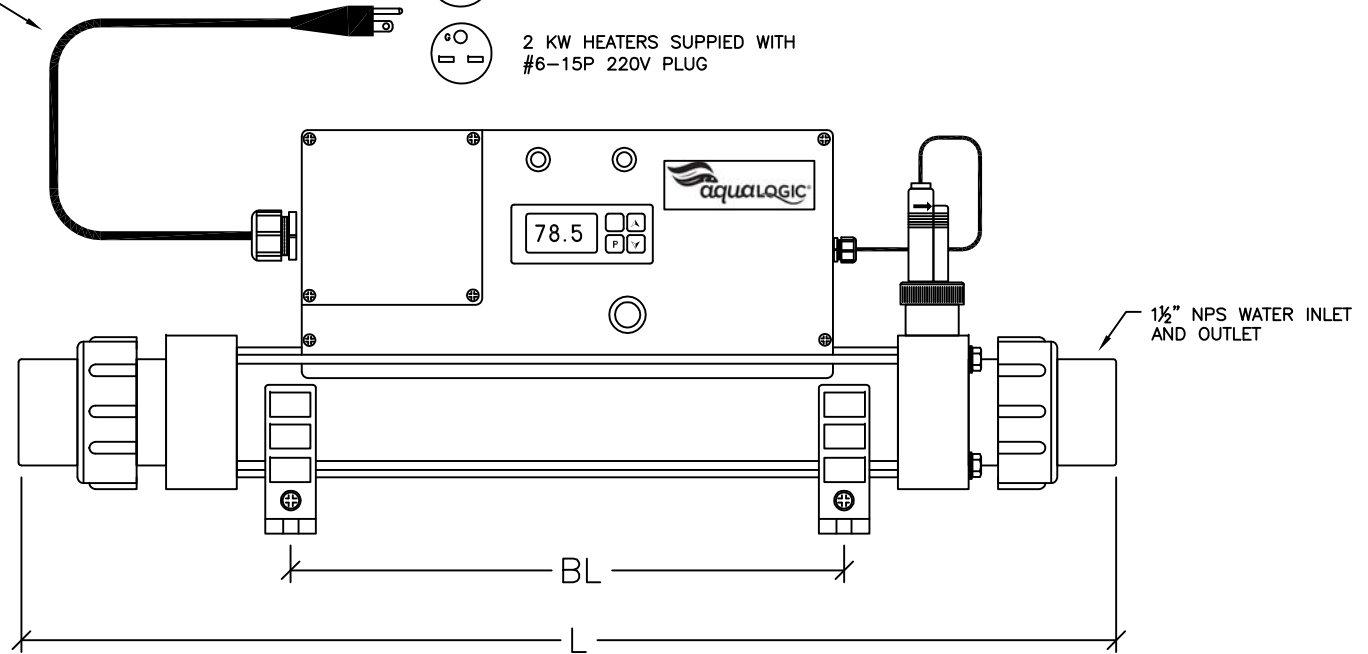
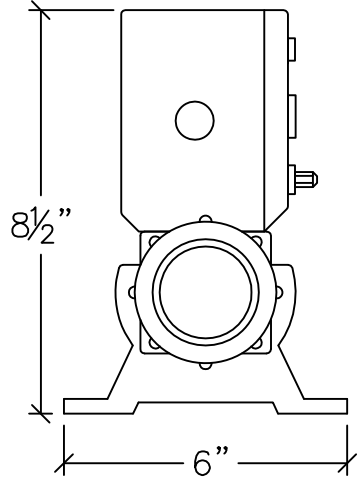
NOTE: IT IS RECOMMENDED THAT ALL HEATERS LARGER THAN 2 KW BE HARD WIRED TO THE ELECTRICAL SUPPLY BY A QUALIFIED ELECTRICIAN.



1.5 KW HEATERS SUPPLIED WITH #5-20P 115V PLUG



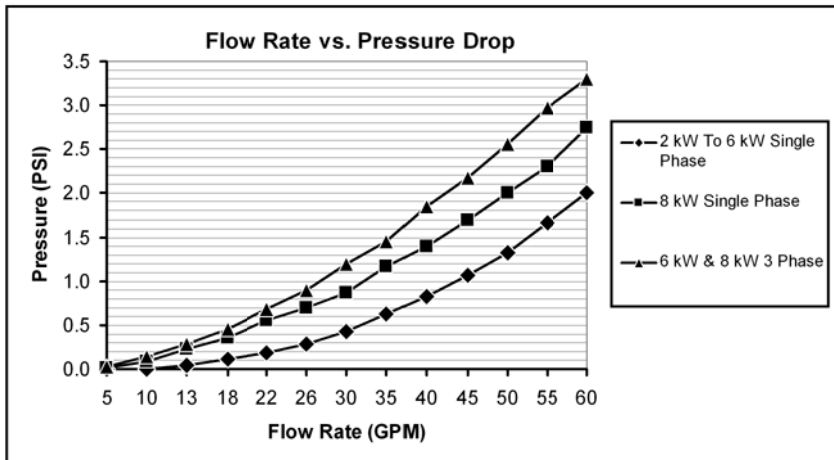
2 KW HEATERS SUPPLIED WITH #6-15P 220V PLUG



INLINE HEATER SPECIFICATIONS

MODEL	KW	VOLTS	PHASE	AMPS	L	BL
HSS-1.5-115	1.5	115	1	13	23"	12.5"
HSS-2-115	2	115	1	17.4	23"	12.5"
HSS-2-220	2	220	1	9	23"	12.5"
HTI-1.5-115	1.5	115	1	13	23"	12.5"
HTI-2-115	2	115	1	17.4	23"	12.5"
HTI-2-220	2	220	1	9	23"	12.5"
HTI-3-220	3	220	1	13.6	23"	12.5"
HTI-4-220	4	220	1	18	23"	12.5"
HTI-6-220	6	220	1	27	23"	12.5"
HTI-6-220-3	6	220	3	24	27"	16.5"
HTI-8-220	8	220	1	36.4	27"	16.5"
HTI-8-220-3	8	220	3	33	27"	16.5"

HSS- 316 STAINLESS STEEL MODELS  
HTI- PURE TITANIUM MODELS



Aqua Logic, Inc.  
8268 Clairemont Mesa Blvd. Suite 302  
San Diego, CA 92111

TITLE: 1.5 THRU 8 KW INLINE HEATERS

LAST UPDATE: 8-23-07

DATE: 7-25-07

FILE: ELECRO HEATER

BY CE